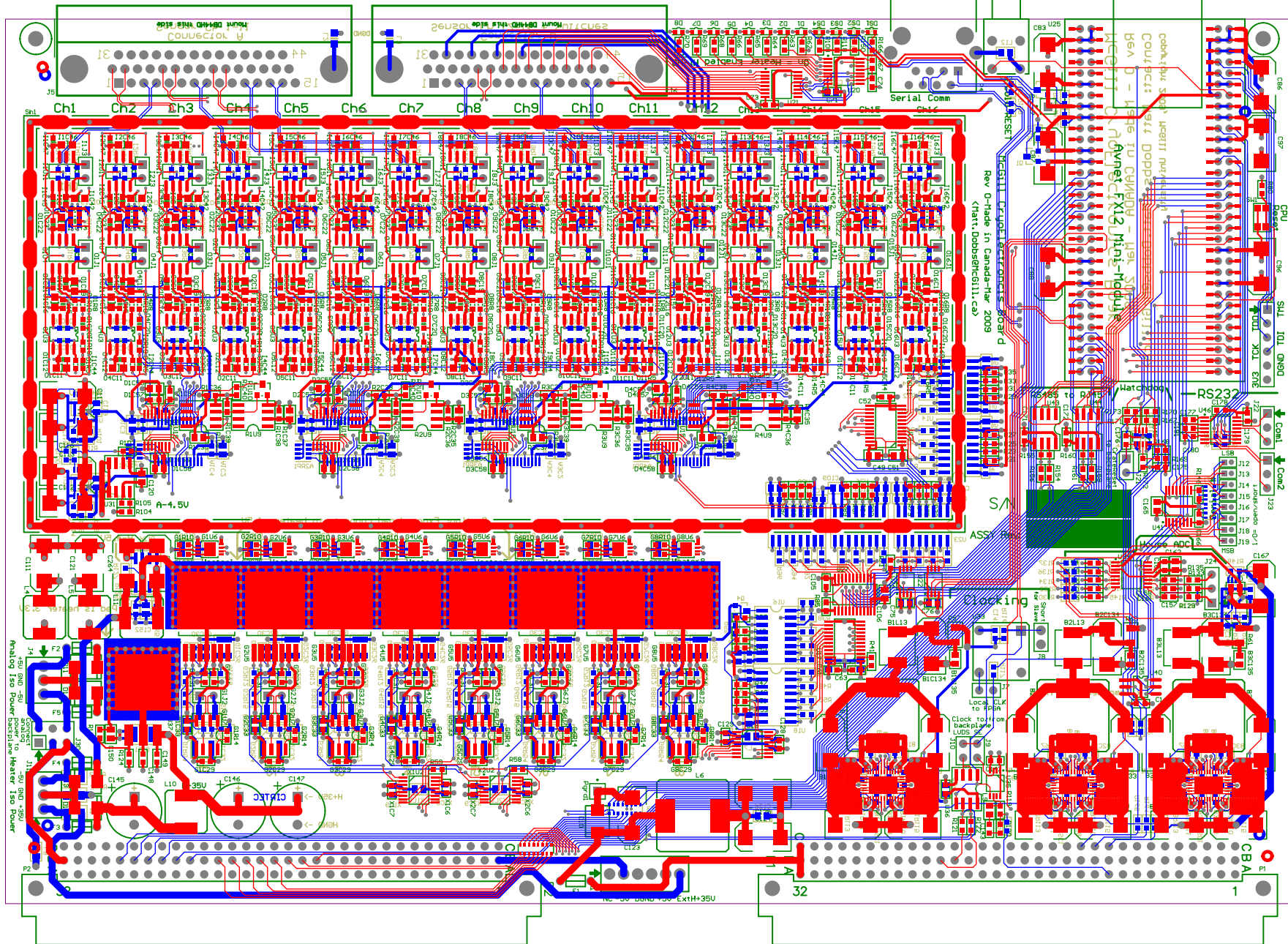


McGill CryoElectronics Board
Rev 0 - Made in CANADA - Mar 2009
Copyright 2009, McGill University

Nominal Size: 9.187 x 6.299 inches
FINISHED BOARD: 0.062 Nom 370HR
ARRANGE LAYERS SEQUENTIALLY: L1-L6
Yellow Mask & Black TEXT

Thieving Copper Dots CAN be added to INNER layers if needed

.GTL



L1(TOP)

lE(BOT)

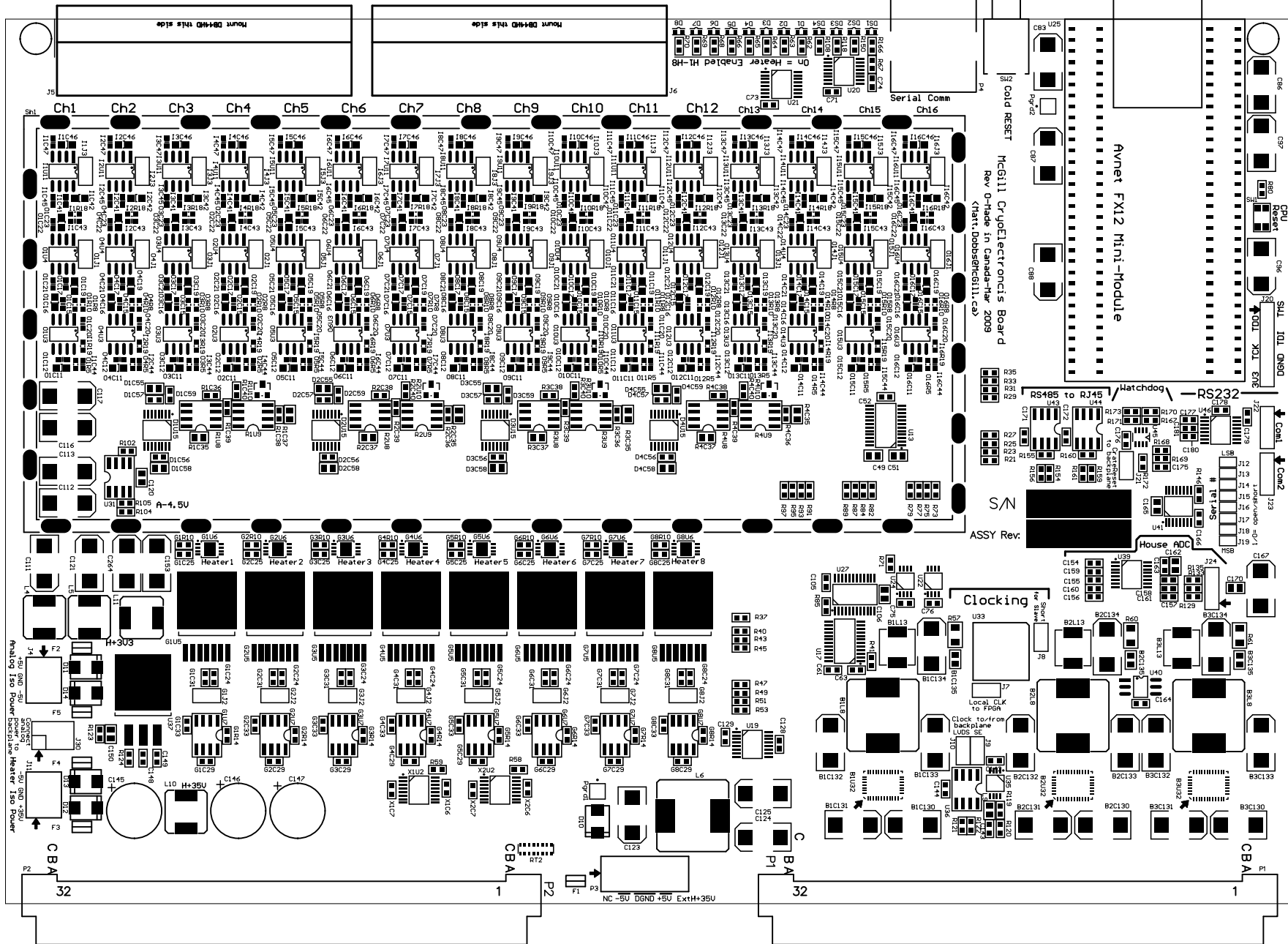
TOP IDENT BOTTOM IDENT

McGill CryoElectronics Board
Rev 0 - Made in CANADA - Mar 2009
Copyright 2009, McGill University

Nominal Size: 9.187 x 6.299 inches
FINISHED BOARD: 0.062 Nom 370HR
ARRANGE LAYERS SEQUENTIALLY: L1-L6
Yellow Mask & Black TEXT

.GT0

Thieving Copper Dots CAN be added to INNER layers if needed



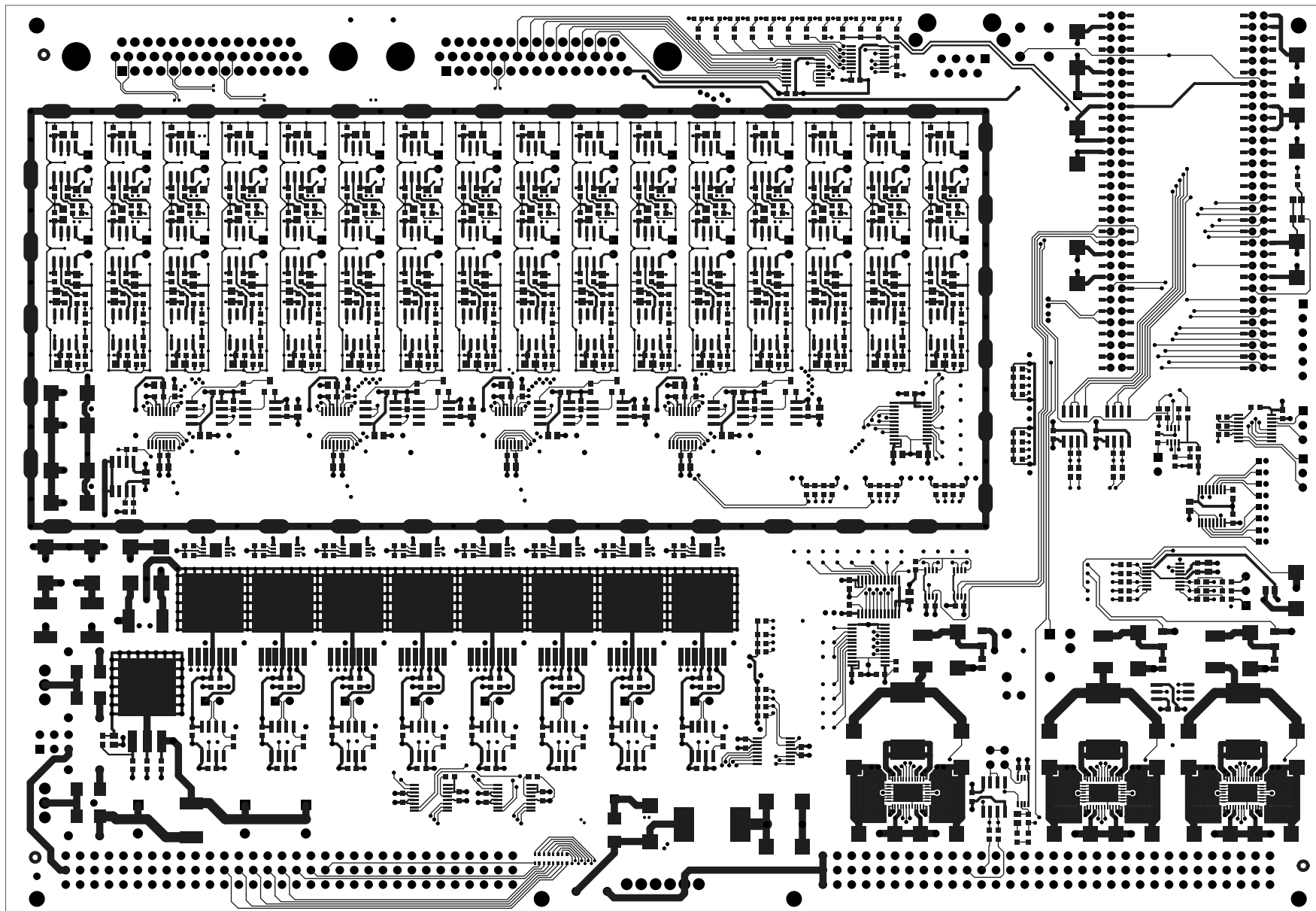
TOP SOLDER PASTE

TOP IDENT

McGill CryoElectronics Board
Rev 0 - Made in CANADA - Mar 2009
Copyright 2009, McGill University

Nominal Size: 9.187 x 6.299 inches
FINISHED BOARD: 0.062 Nom 370HR
ARRANGE LAYERS SEQUENTIALLY: L1-L6
Yellow Mask & Black TEXT
Thieving Copper Dots CAN be added to INNER layers if needed

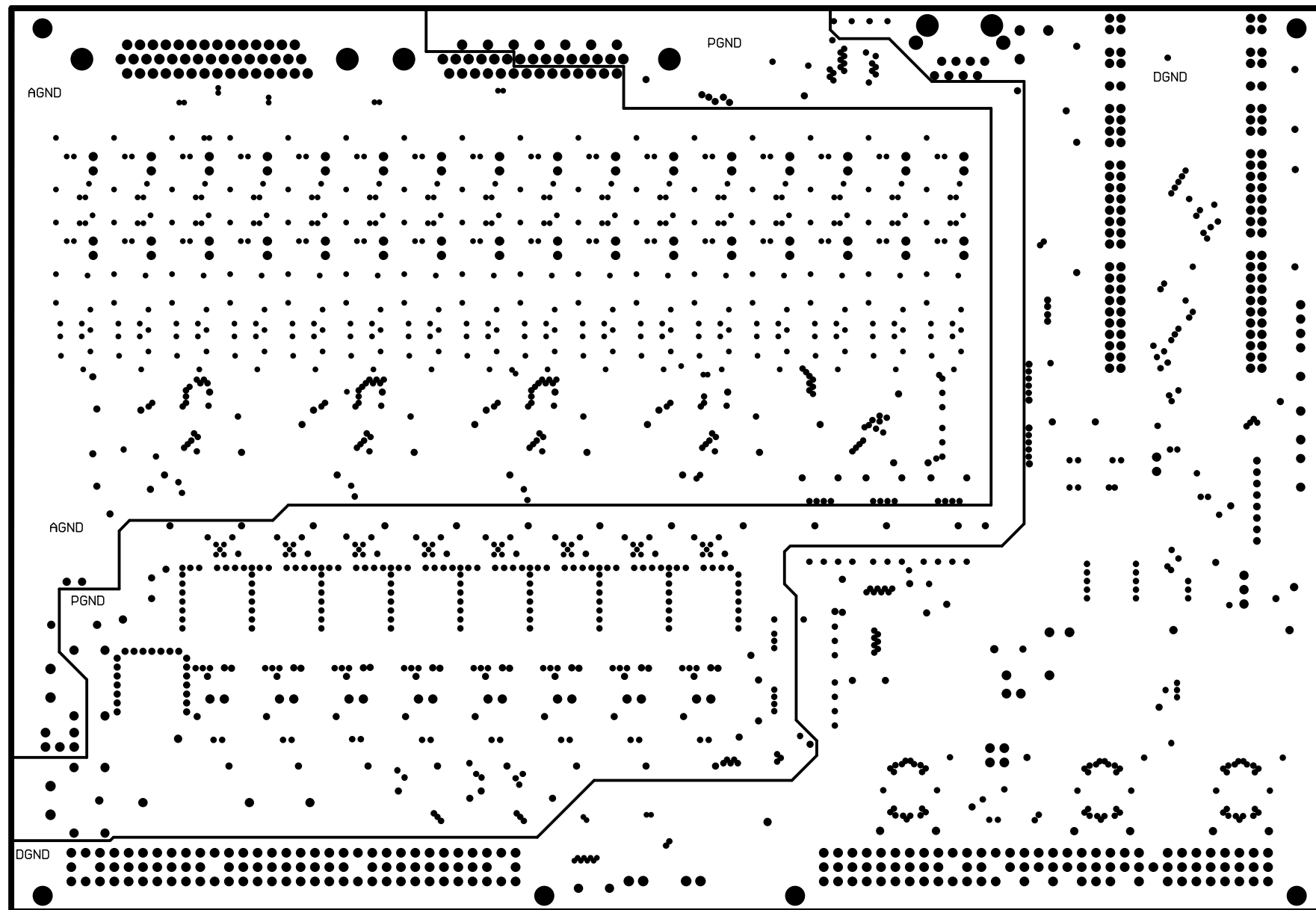
.GTL



McGill CryoElectronics Board
Rev 0 - Made in CANADA - Mar 2009
Copyright 2009, McGill University

Nominal Size: 9.187 x 6.299 inches
FINISHED BOARD: 0.062 Nom 370HR
ARRANGE LAYERS SEQUENTIALLY: L1-L6
Yellow Mask & Black TEXT
Thieving Copper Dots CAN be added to INNER layers if needed

.GP1

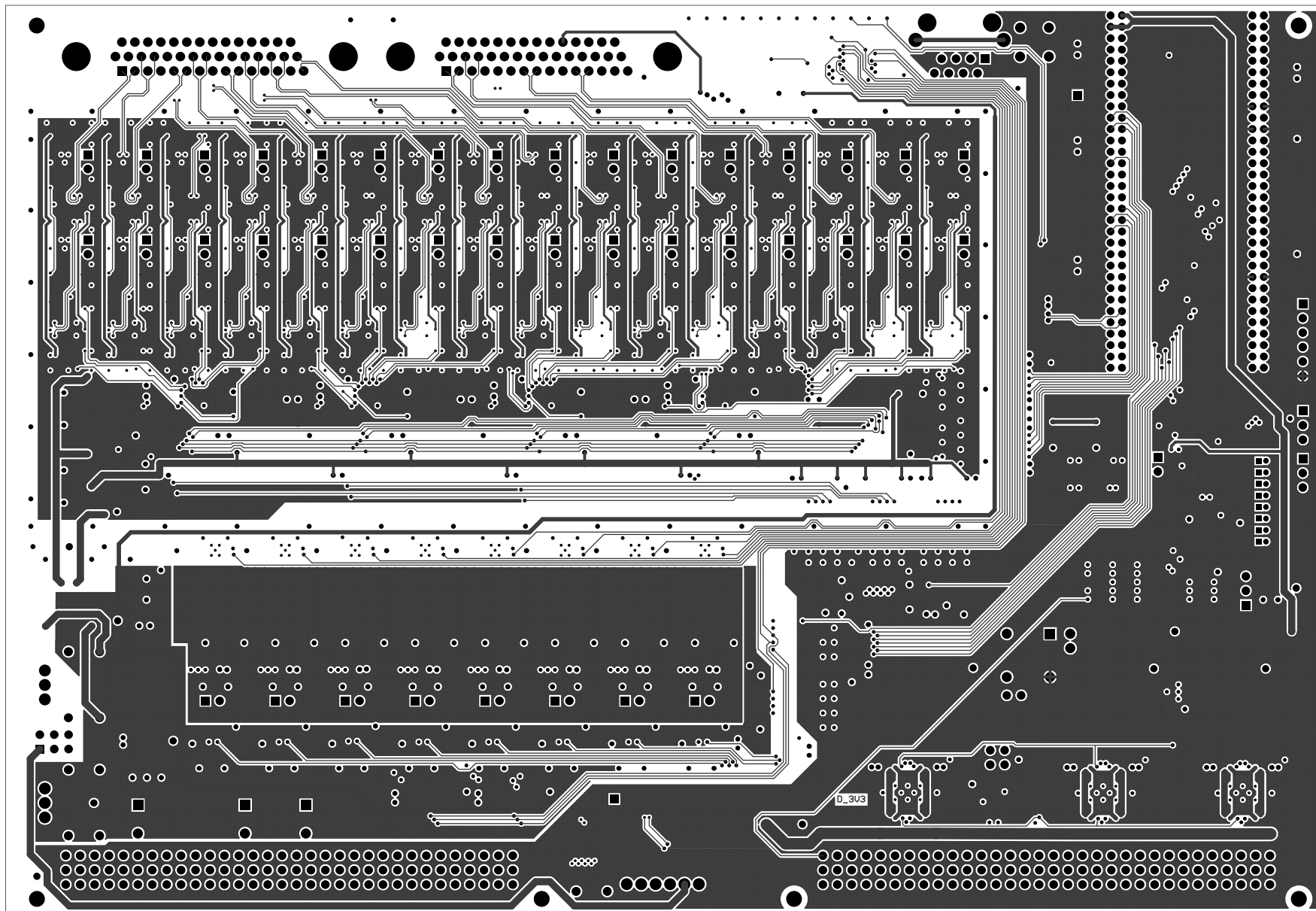


L2(GND)

McGill CryoElectronics Board
Rev 0 - Made in CANADA - Mar 2009
Copyright 2009, McGill University

Nominal Size: 9.187 x 6.299 inches
FINISHED BOARD: 0.062 Nom 370HR
ARRANGE LAYERS SEQUENTIALLY: L1-L6
Yellow Mask & Black TEXT
Thieving Copper Dots CAN be added to INNER layers if needed

.G1

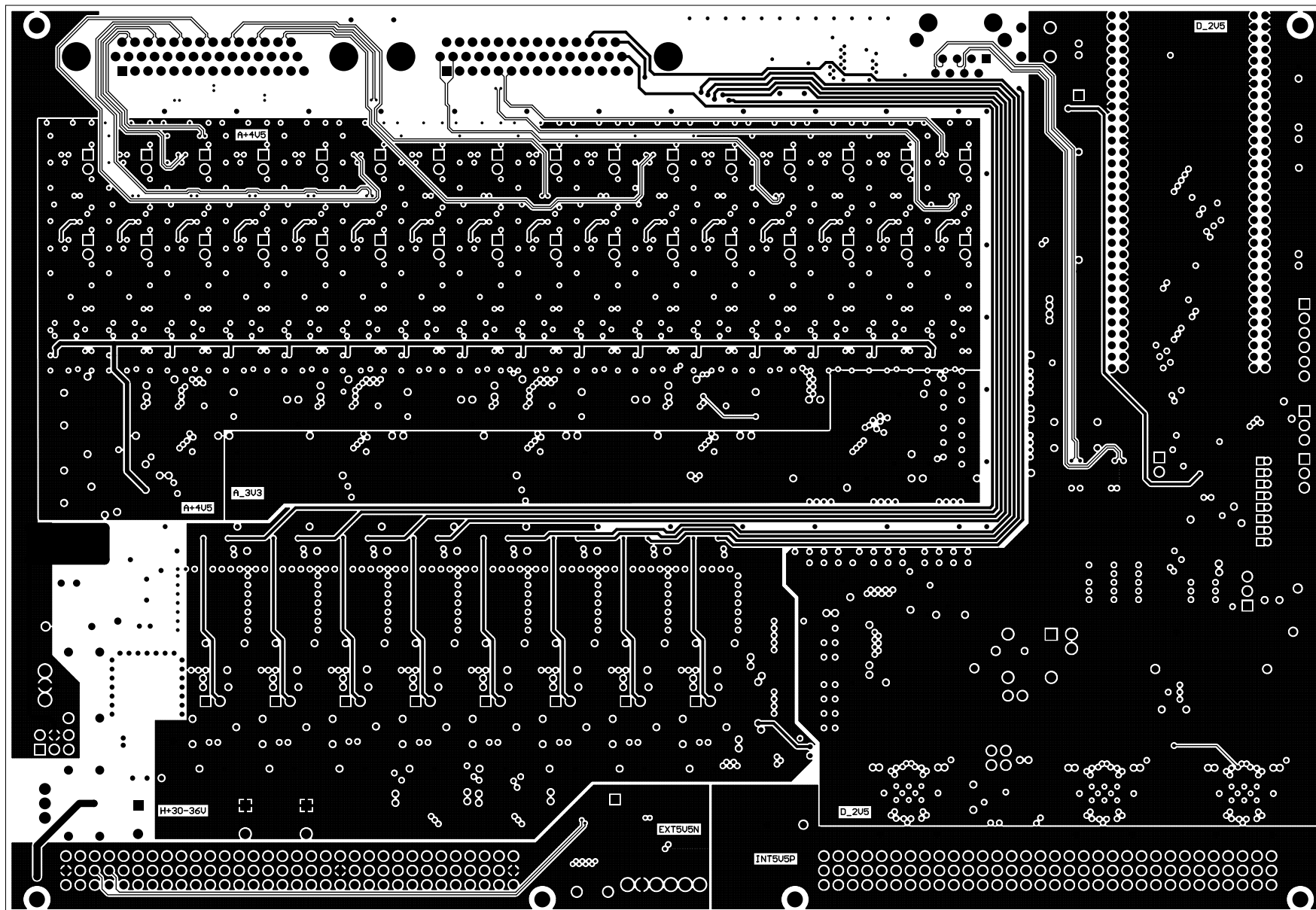


L3(ML1)

McGill CryoElectronics Board
Rev 0 - Made in CANADA - Mar 2009
Copyright 2009, McGill University

Nominal Size: 9.187 x 6.299 inches
FINISHED BOARD: 0.062 Nom 370HR
ARRANGE LAYERS SEQUENTIALLY: L1-L6
Yellow Mask & Black TEXT
Thieving Copper Dots CAN be added to INNER layers if needed

.G2

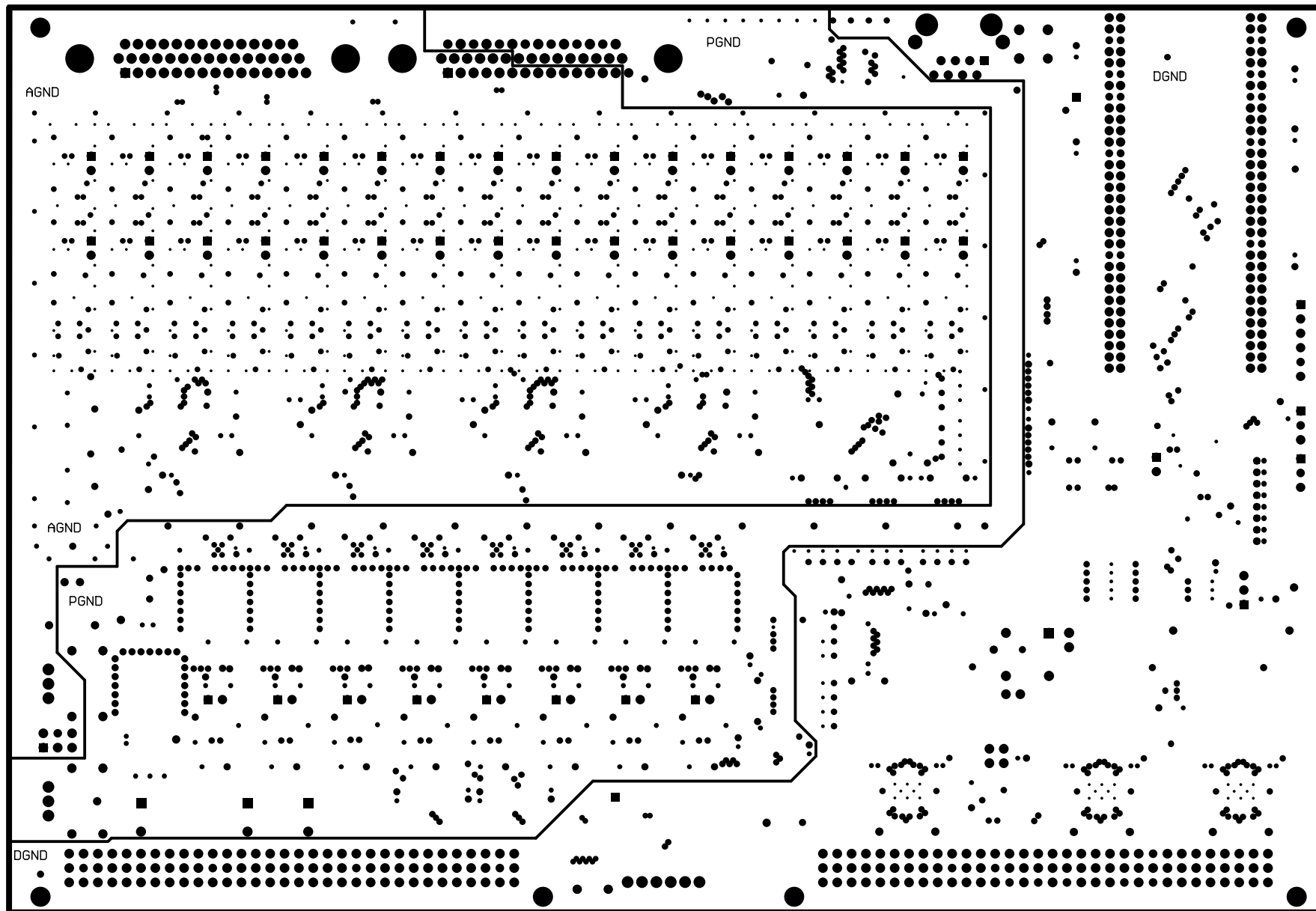


L4(ML2)

McGill CryoElectronics Board
Rev 0 - Made in CANADA - Mar 2009
Copyright 2009, McGill University

Nominal Size: 9.187 x 6.299 inches
FINISHED BOARD: 0.062 Nom 370HR
ARRANGE LAYERS SEQUENTIALLY: L1-L6
Yellow Mask & Black TEXT
Thieving Copper Dots CAN be added to INNER layers if needed

.GP2

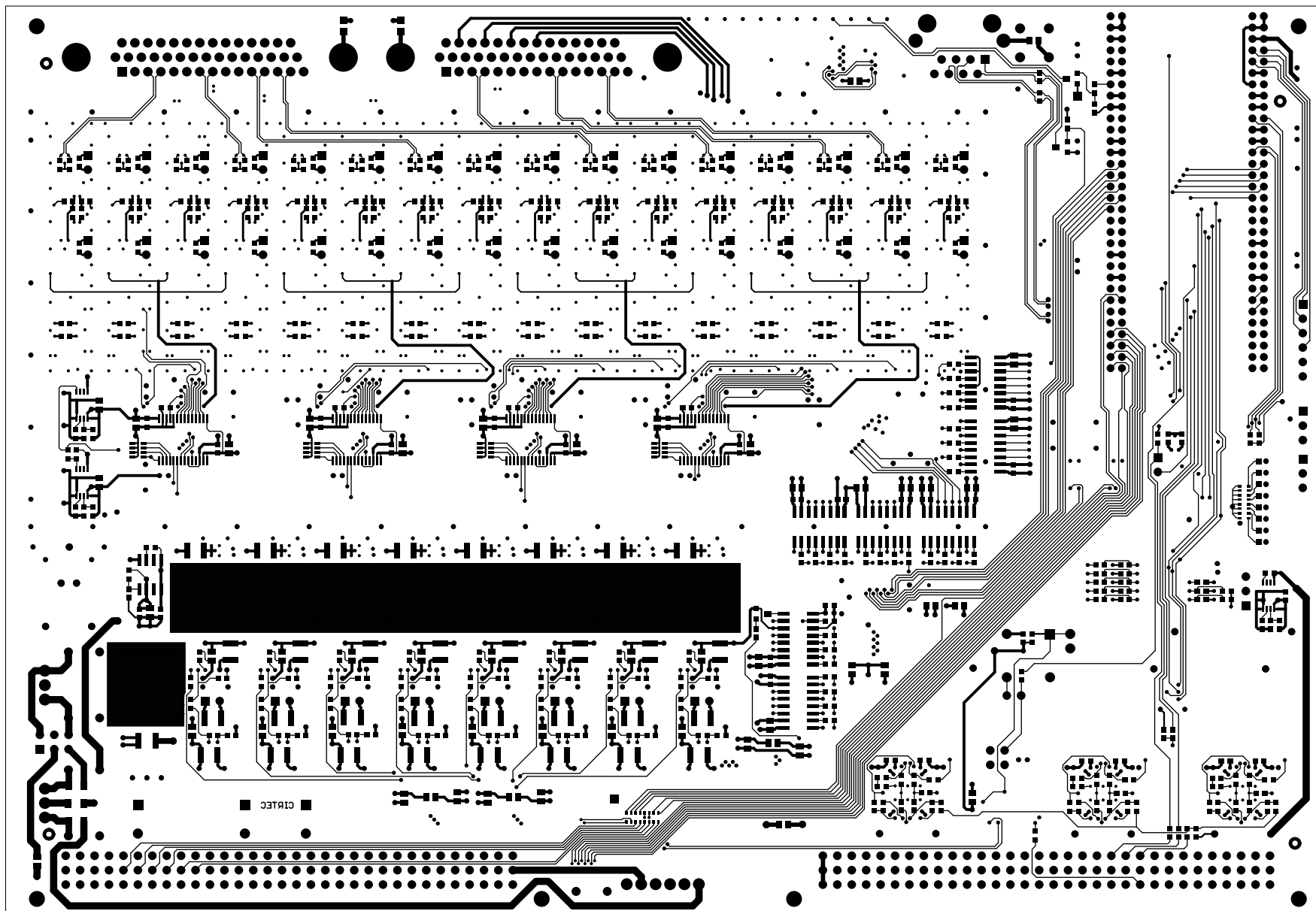


L5(GND)

McGill CryoElectronics Board
Rev 0 - Made in CANADA - Mar 2009
Copyright 2009, McGill University

Nominal Size: 9.187 x 6.299 inches
FINISHED BOARD: 0.062 Nom 370HR
ARRANGE LAYERS SEQUENTIALLY: L1-L6
Yellow Mask & Black TEXT
Thieving Copper Dots CAN be added to INNER layers if needed

.GBL



(TOP)

McGill CryoElectronics Board
 Rev 0 - Made in CANADA - Mar 2009
 Copyright 2009, McGill University

Nominal Size: 9.187 x 6.299 inches
 FINISHED BOARD: 0.062 Nom 370HR
 ARRANGE LAYERS SEQUENTIALLY: L1-L6
 Yellow Mask & Black TEXT
 Thieving Copper Dots CAN be added to INNER layers if needed

370HR : 6 Layer PCB, Approximate Build:

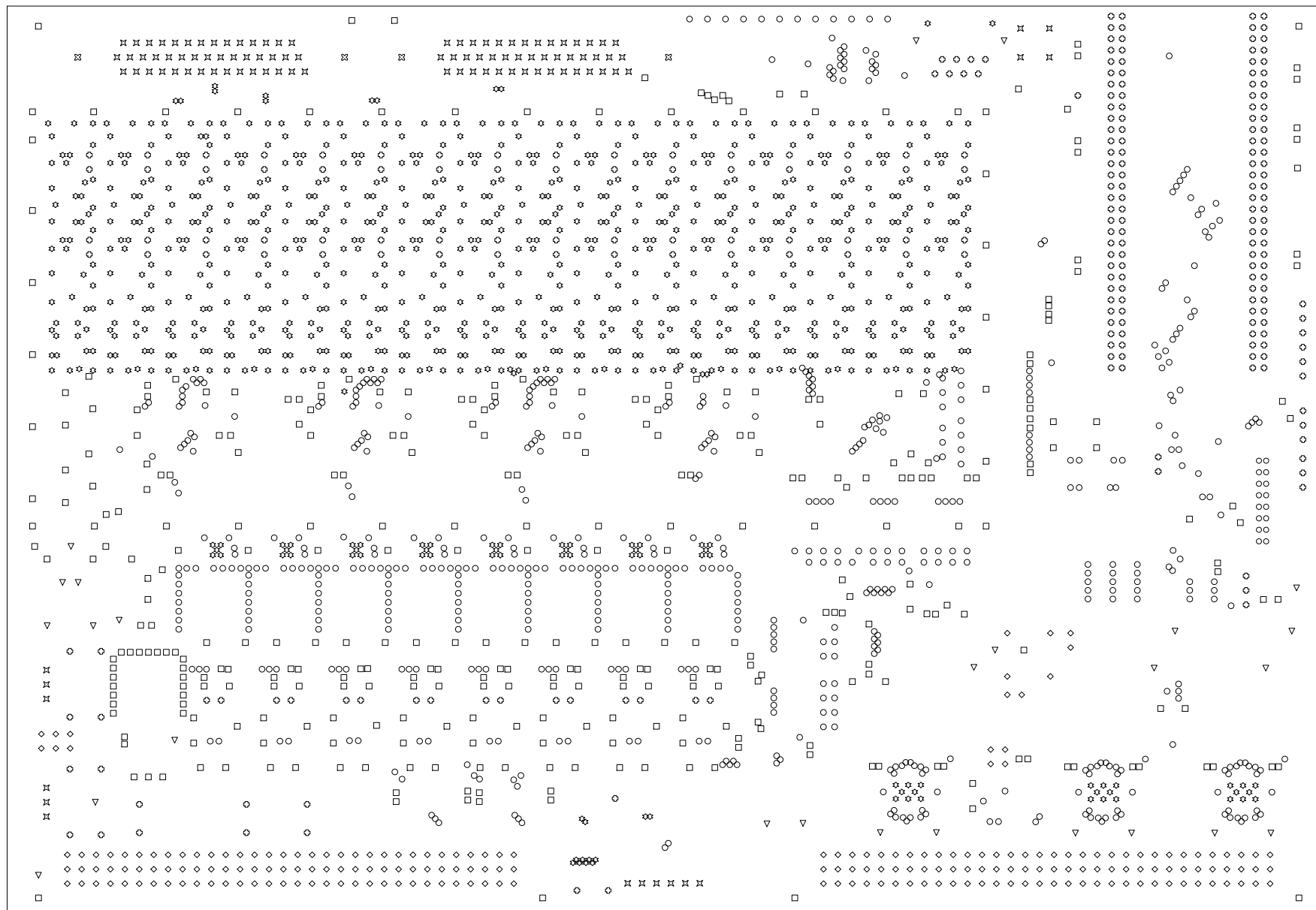
- L1 ——— TopLayer :0.5 oz Plus Plating
equal spacing
- L2 ——— Plane 1: 1 oz
equal spacing
- L3 ——— MidLayer1: 1 oz
- Excess Material
- L4 ——— MidLayer2 : 1 oz
equal spacing
- L5 ——— Plane 2 : 1 oz
equal spacing
- L6 ——— Bottom Layer :0.5 oz Plus Plating

Total thickness = .062 inches

ALL Layers Equal Spaced from Adjacent PLANE

FINISHED HOLE SIZES

*	845	10mil	0.254mm	PTH
o	613	15mil	0.381mm	PTH
□	372	20mil	0.508mm	PTH
o	16	23.622mil	0.6mm	PTH
▽	24	28mil	0.7112mm	PTH
◇	251	35mil	0.889mm	PTH
◇	210	38mil	0.9652mm	PTH
x	104	43mil	1.0922mm	PTH
▽	2	69mil	1.7526mm	PTH
□	6	110mil	2.794mm	NPTH
※	4	128mil	3.2512mm	PTH
*	2	128mil	3.2512mm	NPTH
	2449	Total		



DRILL DRAWING